

Azzardo®

PLEASE READ THIS INFORMATION BEFORE THE INSTALLATION!

Operation instructions and safety guidelines.

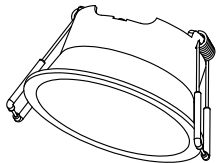
AZZARDO SP.ZO.O, the distributor of the Azzardo brand, shall take the guarantee commitments solely on condition that the lamp is used properly and in accordance with the below sections. Please keep the leaflet and all documents related to the product purchased.

Lighting equipment requiring ceiling/wall installation and connection to the electrical system should be installed by a duly authorized professional. The manufacturer disclaims responsibility for damages or losses resulting from an improper installation and putting into service.

The guidelines contained in these instructions should be observed during the installation.

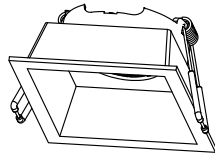
It should be noted that different types of surface and materials which they are made of require using different types of installation dowels and screws. Dowels supplied with a fixture are not always suitable for your surface! If a fixture is installed on a surface with good electrical conductivity, elements insulating the fixture from this surface should be used.

AZ4073
AZ4074



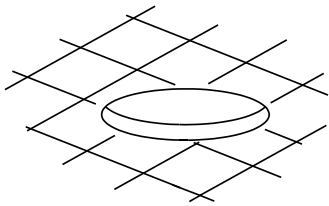
Cut-out Ø75mm

AZ4075
AZ4076

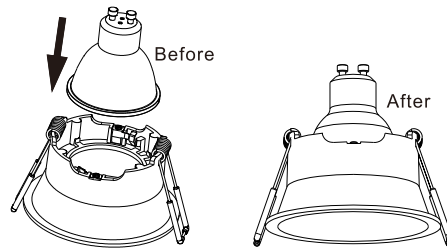


Cut-out 75x75mm

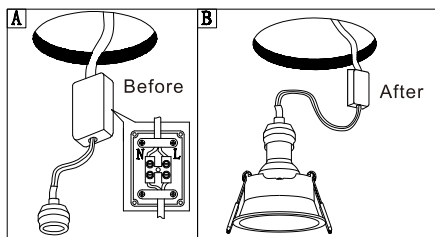
1. Cut the ceiling according to product ceiling cut-out diameter size.



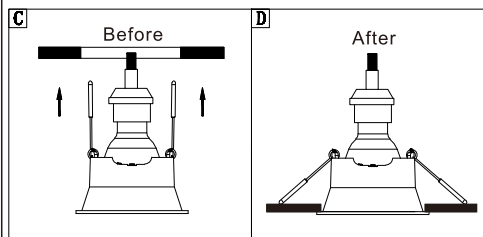
2. Fix GU10 LED bulb to the fixture.



3. Connect the main power to the socket, screw the bulb into the socket.



4. Push the spring upward into the hold and release it. Fixture is ready to use.



- Before the installation/removal or cleaning, the lighting fixture must be disconnected from the electrical system.
- The regulations for the making of electrical systems should be observed during the installation.
- The electrical elements of the lighting fixture must not be exposed to humidity.
- After the installation of the lighting fixtures, check if the cables of the lamp are not damaged.
- Non-conductive elements of the lighting fixture (like the lampshade) can be cleaned with a damp cloth; before the lamp is turned on, the fixture must be dry.
- Light sources (bulbs, fluorescent lamps, halogen bulbs) and nearby elements get heated to a temperature of 350°C, so they should cool down before replacement or cleaning.
- Before a light source is replaced, the type, voltage and wattage of light sources should be taken into consideration. Using a source with different parameters than the recommended by the manufacturer may result in the lamp damage and the loss of the guarantee.
- Never touch the glass surface of a halogen bulb being replaced directly with your hands! It may result in the damage and reduction of durability of the bulb. We recommend using clean towels or tissues.
- Clothes or other fabrics (like hangings) must not contact or remain in close vicinity of the lighting fixture and the standing-type fixture must stand on an even, solid surface. Falling over of the lamp or heating of the fabrics may cause a fire.
- Lamps with a low-voltage transformer or an ignition system installed are not designed for so called dimmers! Using a dimmer in this case may cause damage and the loss of the guarantee. It does not apply to lamps for which the co-operation with dimmers is declared.
- The lamp is supplied with basic installation elements: dowels, screws.

	Fixture designed to use indoors. Installing it outdoors is forbidden
	Fixture of second class of protection with double-insulated wires.
	Fixture of the first class of protection. It should be connected to a ground terminal (green and yellow wire).
	Lighting fixtures not designed for installation directly on normally flammable surfaces (suitable for inflammable surfaces only)
	Lighting fixtures not designed to be covered with a thermal insulating material.
	Minimum distance from the illuminated object (metres).

Materials used for the production of the lamp are natural; therefore the following specific features of the material should be taken under consideration:

- For manually blown glass, air pockets can appear which indicate a high-quality manufacturing process of the product.
- Ornamental wooden elements can occasionally have different shades of colours or small dots. As wood is a natural material with unchanged properties, such discrepancies can occur, but shall not constitute any basis for complaints, but they add naturalness to the wooden material in all its forms.
- Inclusions on the surface layer, discolouring, soldering spots, traces of welding or scratches can be seen on the fixture's elements brushed or covered with clear lacquer steel, or ferrous elements, which are specific for non-machined steel, therefore they do not deteriorate its value.

